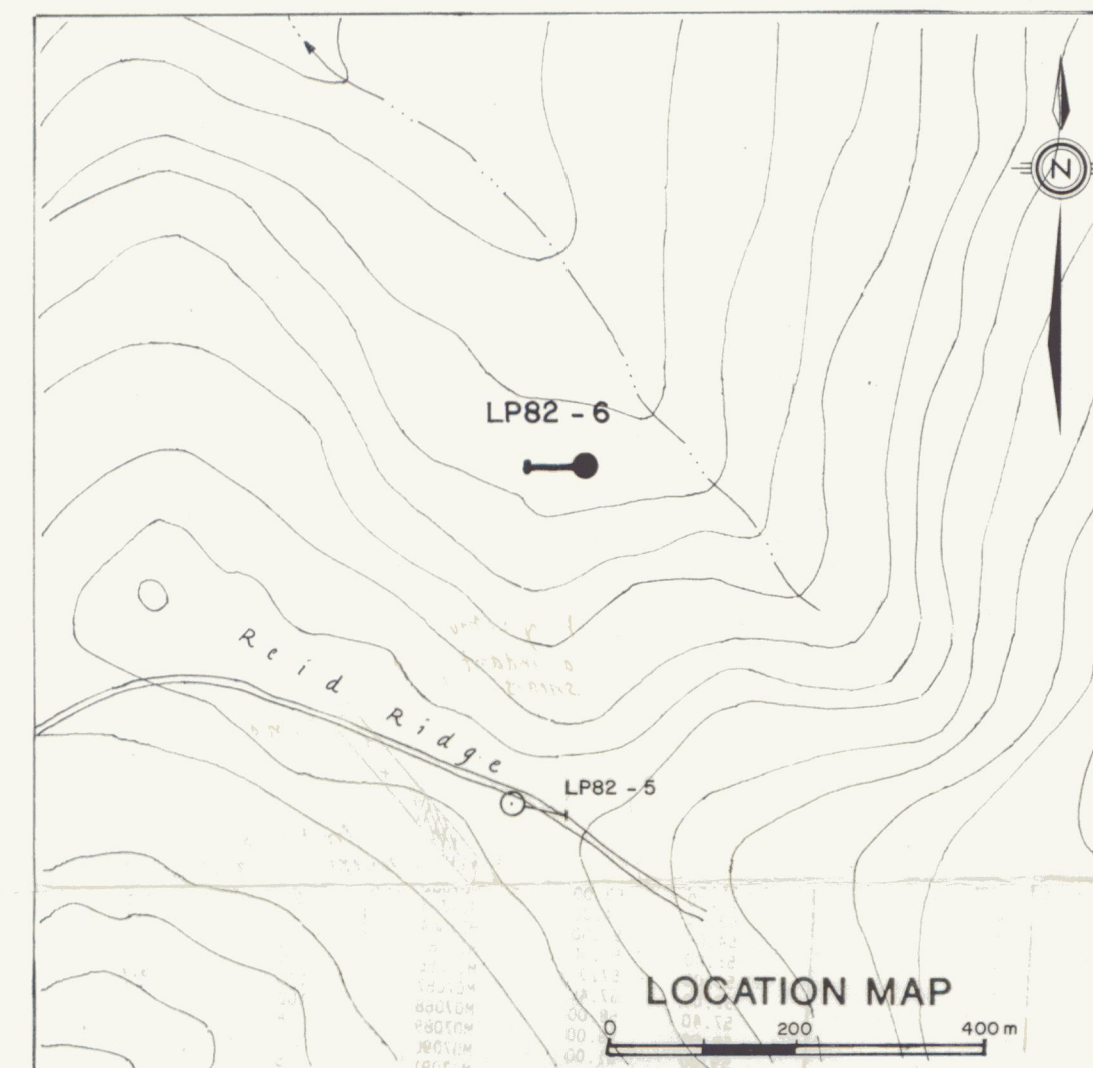
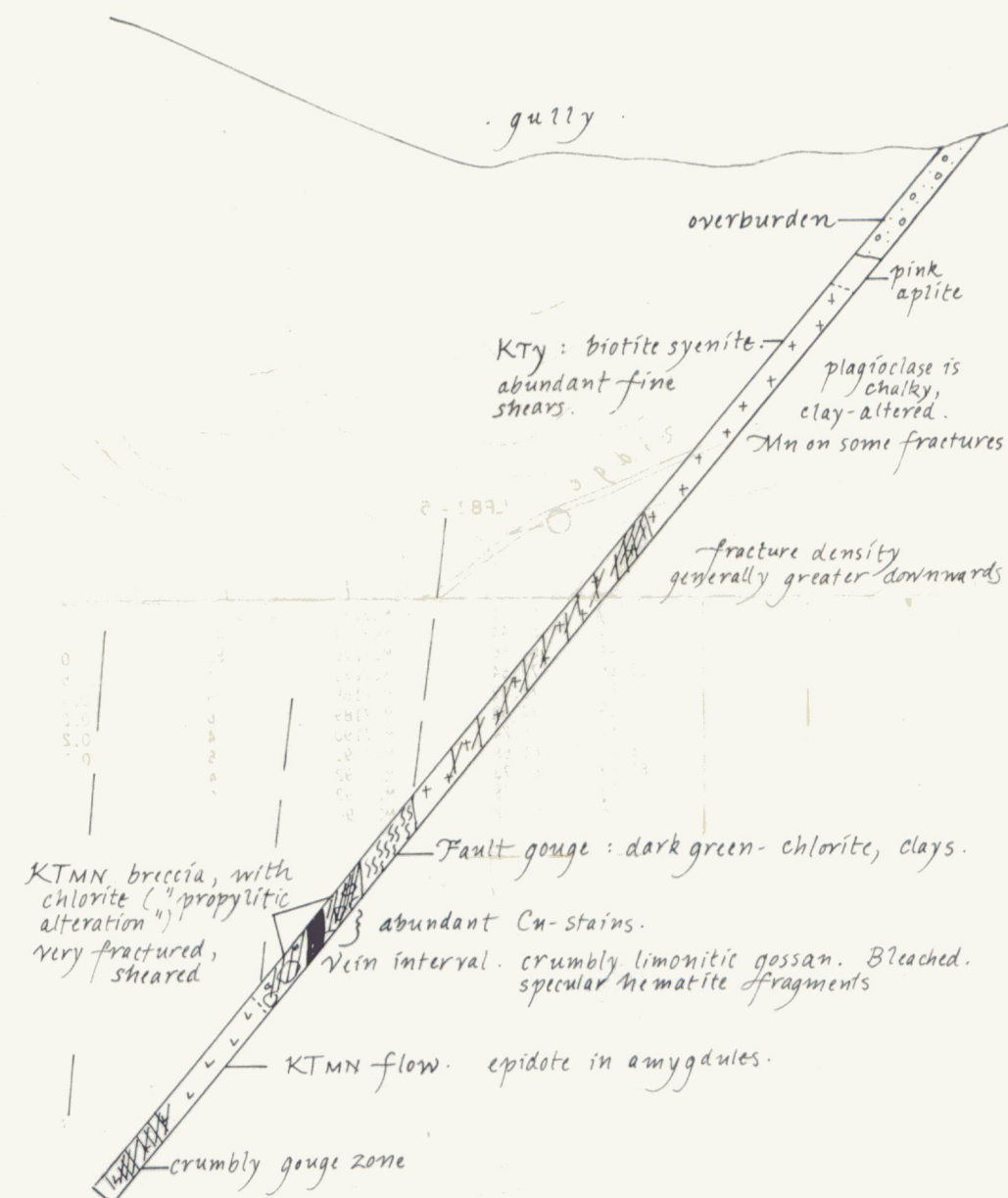


INTERVAL		SAMPLE NUMBER	ASSAY RESULTS		
From	To		ppb Au	ppm Ag	ppm Pb
29.87	31.09	M07267	4	0.1	35
49.68	50.90	M07268	20	0.2	19
53.64	54.56	M07272	2	0.2	27
54.56	55.85	M07269	2	1.3	24
55.85	57.30	M07187	5	0.6	25
57.30	60.35	M07273	4	1.3	145
60.35	66.44	M07274	43	20.0	4400
66.44	67.66	M07270	82	38.0	4500
67.66	72.54	M07271	4	0.5	92
72.54	75.59	M07188	9	0.3	53
75.59	77.50	M07189	6	0.2	29
77.50	79.24	M07190	4	0.2	64
79.24	81.68	M07191	5	0.1	27
81.68	84.73	M07192	4	0.1	23
84.73	87.78	M07193	6	0.1	31
87.78	90.22	M07194	36	0.2	295

HOLE LP82-6  
 COORDINATES 48,910N, 54,286E  
 COLLAR ELEVATION 1426m  
 AZIMUTH 265° DIP -50°  
 DEPTH 90.2m (296')



*W. Tonge*  
*J. Taylor*  
 Figure L8

ARCHER, CATHRO & ASSOCIATES (1981) LIMITED

# CROSS-SECTION DDH LP82-6 LILYPAD PROPERTY NAT JOINT VENTURE

SCALE 1:500  
 10 0 10 20 30 metres

To accompany report dated December

091435